

# Coffee Shop



Our Coffee Shop at The Moat House on Crow Lane (just off the High Street) is a good place for a quick bite to eat. Pop in for a drink or snack; we have a wide range of hot and cold drinks, home baked cakes, and freshly prepared light lunches. (Takeaway option available or reserve a table on 01634 402268)

You can also browse our range of greetings cards, Christian books, and gift ideas from local artists. Our friendly staff will be pleased to offer you a warm welcome.  Follow us on Facebook

Our current OPENING HOURS are:  
9.30am - 2.30pm Monday to Friday

 Rochester Station

Corporation Street

Blue Boar Lane Car Park 

Rochester High Street

The Moat House  
Coffee Shop 

The Vines Park 

Crow Lane

# Hall Hire



We have three large rooms for hire throughout the week for fitness groups, community groups and kid's parties:

Side Hall - Ground Floor with kitchen and toilets  
Main Hall - First Floor with kitchen, toilets and lift  
Lower Hall - Basement, with toilets

# Who we are



We are a group of people of all ages and backgrounds who come together to praise God and learn from the Bible. We welcome everyone and run lots of activities throughout the week, as well as on Sundays. We'd love to see you!

# What we believe



We believe that the Bible is a true historical document, given to us by God to guide us and teach us that..



God made a beautiful world and had a perfect relationship with people...



However, we decided to reject God, and the relationship was broken...



So God came to us as a man, Jesus, to show us love, to save us, and mend the relationship...



Now we have a choice: to accept God's gift of love and restore the relationship - or not.

# Get in touch



rochesterbaptist



www.rochesterbaptist.co.uk



The Moat House, 8 - 10 Crow Lane, Rochester, Kent, ME1 1RF

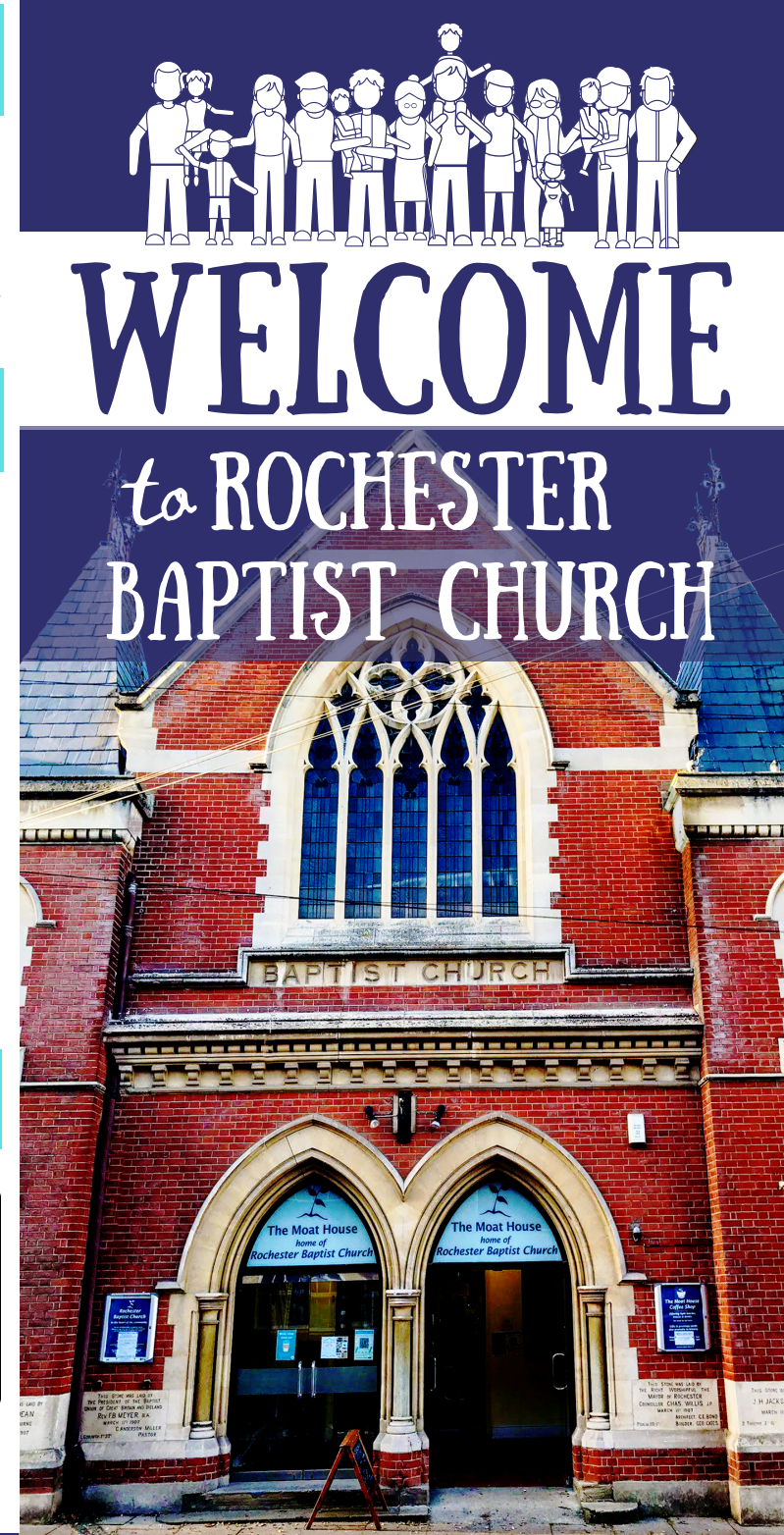


info@rochesterbaptist.co.uk

Scan the QR-code to go straight to our website.



SCAN ME



# SUNDAYS



## Mornings



**10:00 Drinks in our coffee shop**

**10:30 Meeting together**

At 10.30am we meet together in our Main Hall upstairs to worship God, hear a message from the Bible and encourage one another. For the first 20 minutes everyone is together, then Children's Church (for primary school age) leave for their own activities.

### Children's Church

For all children in reception to year 6. Activities include games, craft and videos based around a Bible story.

### Creche

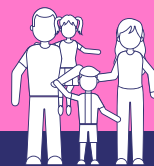
A Creche area is available throughout the meeting for babies and pre-schoolers, and is supervised when the children leave.

## Breakaway



For Children in KS4&5 (school years 10 - 13) this is our oldest youth group and they love eating pizza at other people's houses!

# MIDWEEK



## Toddler Group

Every Monday, 9.30 - 11.30am, upstairs at The Moat House, for children under 5 and parents/carers.

## Coffee Shop

Open Monday - Friday, 9.30 - 2.30pm, for light bites and drinks.

## CAMEO group

Thursdays fortnightly, 10.30 - 12noon, in The Moat House Coffee Shop, for over 60s.

## Daytime Study

Tuesday afternoons and Thursday mornings in The Moat House Coffee Shop, all welcome to read and discuss the Bible.

## Home Groups

Wednesday and Thursday evenings, various times, at various homes in Medway, all welcome to read and discuss the Bible.

## Connect 4 youth group

Fridays term time, 7 - 8.30pm, at The Moat House Side Hall, for 11 - 14 year olds.


# CHILDREN



## Toddlers

**09:30 - 11.30am Mondays**

Our **Little Stars playgroup** welcomes children aged under 5 and their parents/carers during term time. Activities include small world play, role play, messy play, mark making, obstacle course, baby toys, craft, snack, songs and stories.

The session starts at 9.30am, then snack time at 10:30am, and after tidy-up time we finish with singing, stories and lots of dancing. £1.50 per family. No need to book.  Find us on Facebook.

## Children's Church

Sunday mornings for reception to year 6. Activities include games, craft and videos based around a Bible story.

## Youth 11 - 14s

**Connect 4**

CONNECT 4 meets in term time at The Moat House on Friday evenings for games, quizzes, Bible study and lots of fun and food!

## Youth 14 - 18

**Breakaway**

Breakaway meets fortnightly for games, snacks and Bible study